

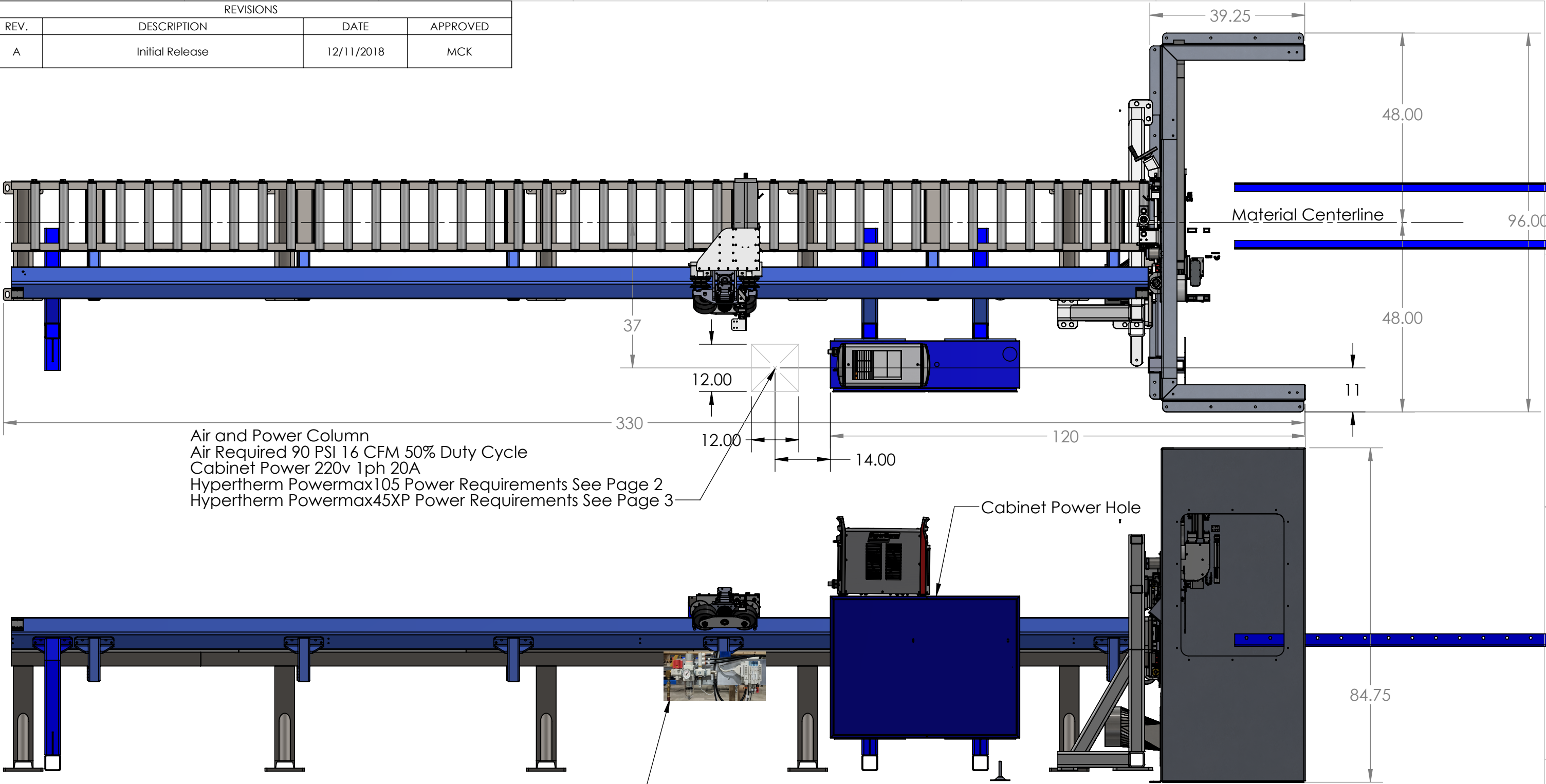
REVISIONS			
REV.	DESCRIPTION	DATE	APPROVED
A	Initial Release	12/11/2018	MCK

D

C

B

A



Air and Power Column
Air Required 90 PSI 16 CFM 50% Duty Cycle
Cabinet Power 220v 1ph 20A
Hypertherm Powermax105 Power Requirements See Page 2
Hypertherm Powermax45XP Power Requirements See Page 3

Air Hookup Will need Flexible Whip
Plumbed for 1/2NPT

Cabinet Power Hole

USED ON	PART NUMBER
NEXT ASSEMBLY	
PROPRIETARY AND CONFIDENTIAL	
THE INFORMATION CONTAINED IN THIS DRAWING IS THE SOLE PROPERTY OF ELECTRO-MECHANICAL INTEGRATORS, INC. ANY REPRODUCTION IN PART OR AS A WHOLE WITHOUT THE WRITTEN PERMISSION OF ELECTRO-MECHANICAL INTEGRATORS, INC. IS PROHIBITED.	

CONFIDENTIAL UNLESS OTHERWISE SPECIFIED DIMENSIONS ARE IN INCHES TOLERANCES: DECIMALS ANGLES X.X ±0.020 X ±1.0° X.XX ±0.010 X.X ±0.5° X.XXX ±0.005	
INTERPRET GEOMETRIC TOLERANCING PER:	
MATERIAL	
FINISH	Top-Level Assembly
DO NOT SCALE DRAWING	

3rd ANGLE PROJECTION	
DRAWN	NAME DATE A.Ladedu/29/2018
CHECKED	11/29/2018
ENG APPR.	
MFG APPR.	
Q.A.	
PartNo_A_Title	

TITLE: ACP	
ACPC2100 Angle Channel Machine	
SIZE	DWG. NO. REV
B	007465 A
SCALE: 1:50 WEIGHT LB: 0.00 SHEET 1 OF 4	

POWER SUPPLY SETUP

Power connection for the Powermax105

Powermax105 3-phase systems include the following models:

- The 200–600 V CSA model is a universal power supply that can automatically adjust to operate with AC voltages from 200 to 600 V.
- The 230–400 V CE model can automatically adjust from 230 to 400 V.
- The 380 V CCC/230–400 V CE model can automatically adjust from 230 to 400 V.


Note: To maintain CE certification, install power cord kit 228886.

- The 400 V CE model is 400 V only.
- The 380 V CCC model is 380 V only.

The rated output is 30–105 A, 160 VDC.

200–600 V CSA					
Input voltage (V)	200	208	240	480	600
Input current (A) at rated output (16.8 kw)	58	56	49	25	22
Input current (A) at arc stretch	82	82	78	40	35
Fuse, slow-blow (A)	80	80	80	40	40

230–400 V CE		
Input voltage (V)	230	400
Input current (A) at rated output (16.8 kw)	50	29
Input current (A) at arc stretch	80	46
Fuse, slow-blow (A)	80	50



<div>USED ON</div> <div>NEXT ASSEMBLY</div> <div>PROPRIETARY AND CONFIDENTIAL</div> <div>THE INFORMATION CONTAINED IN THIS DRAWING IS THE SOLE PROPERTY OF ELECTRO-MECHANICAL INTEGRATORS, INC. ANY REPRODUCTION IN PART OR AS A WHOLE WITHOUT THE WRITTEN PERMISSION OF ELECTRO-MECHANICAL INTEGRATORS, INC. IS PROHIBITED.</div>		<div>CONFIDENTIAL</div> <div>UNLESS OTHERWISE SPECIFIED DIMENSIONS ARE IN INCHES</div> <div>TOLERANCES:</div> <div>DECIMALS ANGLES</div> <div>X.X ±0.020 X ±1.0°</div> <div>X.XX ±0.010 X.X ±0.5°</div> <div>X.XXX ±0.005</div> <div>INTERPRET GEOMETRIC TOLERANCING PER:</div> <div>MATERIAL</div> <div>FINISH</div> <div>Top-Level Assembly</div> <div>DO NOT SCALE DRAWING</div>		<div>3rd ANGLE PROJECTION</div> <div><div><div></div><div></div></div></div> <div><div>DRAWN</div><div>CHECKED</div><div>ENG APPR.</div><div>MFG APPR.</div><div>Q.A.</div></div> <div><div>NAME</div><div></div><div></div><div></div><div></div></div> <div><div>DATE</div><div>11/29/2018</div><div></div><div></div><div></div></div>		<div><div></div><div>TITLE:</div><div>ACP</div><div>ACPC2100 Angle Channel Machine</div></div> <div><div>SIZE</div><div>DWG. NO.</div><div>REV</div></div> <div><div>B</div><div>007465</div><div>A</div></div> <div><div>SCALE: 1:50</div><div>WEIGHT LB: 0.00</div><div>SHEET 2 OF 4</div></div>	
--	--	--	--	---	--	---	--

Input voltage	230 V
Input current at rated output (45 A x 145 V = 6.5 kW)	33 A
Input current at arc stretch	37 A
Recommended fuse/breaker size	48 A
Voltage tolerance	20% / -15%

Input voltage	480 V
Input current at rated output (45 A x 145 V = 6.5 kW)	9.4 A
Input current at arc stretch	17 – 12 A
Recommended fuse/breaker size	20 A
Voltage tolerance	+20% / -10%

* An appropriate plug must be installed on the power cord by a licensed electrician according to national and local codes.

Powermax45XP Comes Wired From Factory With Nema 6-50P 10ft Cord

		<div>3rd ANGLE PROJECTION</div> <div></div>		<div> <i>Electro-Mechanical Integrators, Inc.</i></div>	
		<div>UNLESS OTHERWISE SPECIFIED DIMENSIONS ARE IN INCHES TOLERANCES:</div> <div><div>DECIMALS</div><div>ANGLES</div></div> <div><div>X.X ±0.020</div><div>X ±1.0°</div></div> <div><div>X.XX ±0.010</div><div>X.X ±0.5°</div></div> <div><div>X.XXX ±0.005</div></div>		TITLE:	
<div>USED ON</div>		<div>NAME</div>		11/29/2018	
<div>PART NUMBER</div>		<div>DATE</div>		11/29/2018	
<div>NEXT ASSEMBLY</div>		<div>DRAWN</div>		A.Ladedu	
<div>PROPRIETARY AND CONFIDENTIAL</div>		<div>CHECKED</div>			
<div>THE INFORMATION CONTAINED IN THIS DRAWING IS THE SOLE PROPERTY OF ELECTRO-MECHANICAL INTEGRATORS, INC. ANY REPRODUCTION IN PART OR AS A WHOLE WITHOUT THE WRITTEN PERMISSION OF ELECTRO-MECHANICAL INTEGRATORS, INC. IS PROHIBITED.</div>		<div>ENG APPR.</div>			
		<div>MFG APPR.</div>			
		<div>Q.A.</div>			
		<div>PartNo_A_Title</div>			
<div>INTERPRET GEOMETRIC TOLERANCING PER:</div>		<div>SIZE</div>		<div>DWG. NO.</div>	
<div>MATERIAL</div>		<div>B</div>		007465	
<div>FINISH</div>		<div>REV</div>		A	
<div>Top-Level Assembly</div>		<div>SCALE: 1:24</div>		<div>WEIGHT LB: 0.00</div>	
<div>DO NOT SCALE DRAWING</div>		<div>SHEET 3 OF 4</div>			

D

A

4 File Name & Path: 3 2
S:\Solid_Works_Files\Models\Angle Master Machine\Drawings\Originals\ACPC_Machine_Floor_Layout_of_Machine

3

2

DATE _____

29/2018

29/2018

2

5_Floor_

D

1

3

A